

# Rhythos

*Victoria Arduino*





## The signature of our passion.

Carefully nurturing the passion for excellence in all espresso coffee lovers with the most advanced coffee knowledge, the best technology and design.

Working alongside our partners who strive for success through coffee excellence and the principles of ethical, social and environmental responsibility.

With more than 100 years of history and innovation in the coffee industry, our expertise is at your disposal.

**Victoria Arduino,  
inspired by your Passion.**

*Victoria Arduino*





## FOR THOSE WHO LIVE THE LEGEND.

We are people living their profession  
with passion.

We are global citizens linked to our lands and  
territories. We search for innovation respecting  
the people and the environment.

We believe what we do can have an impact.  
We embrace technology and design  
to deliver better results.

We know that maximum precision and control  
are what really makes the difference.  
The details matter.

Mythos remains the legend of creating excellence  
in coffee. Since 2013 it continues its destiny of  
being a key partner in expanding our passion.

And now we expand that partnership to reach  
a new level of grinding perfection. Again.

**THE GRINDING PERFECTION.  
AGAIN.**



# GRINDING PERFECTION. AGVIN.



Mythos was developed to define a new idea of precision and control. Now, the time has come to set a new level of grinding perfection.

## / FLAWLESS USER EXPERIENCE

Integrated touchscreen display, simplified logic, enhancing experience.

## / ABSOLUTE CONTROL

Even more stable temperature, even easier maintenance, even better precision and control.

## / ICONIC DESIGN

An iconic design outside, more efficient inside the pride of Mythos is expressed in every detail.



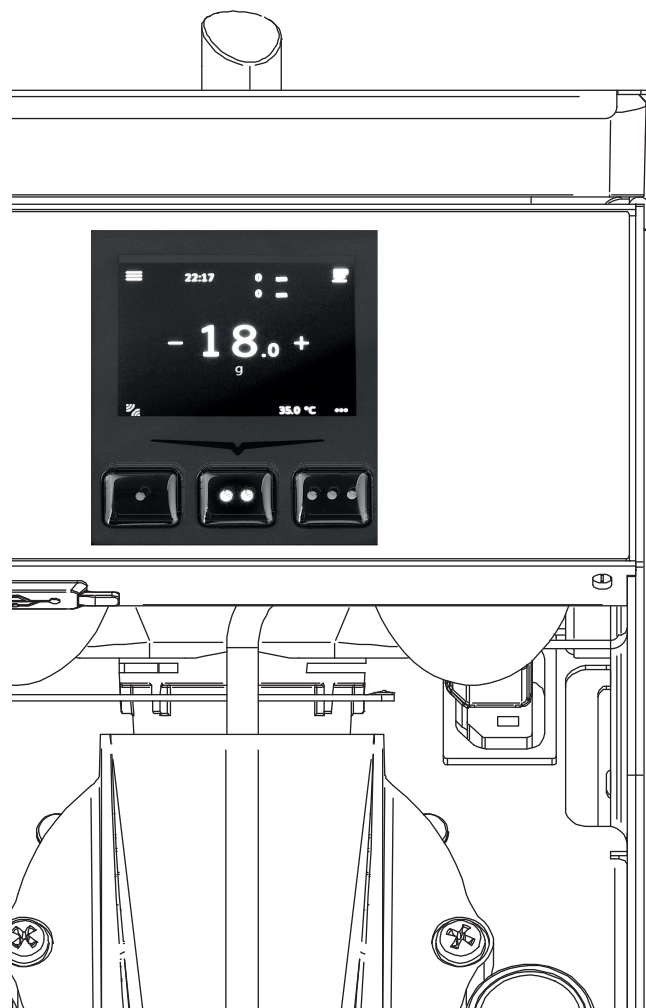


The background features several large, abstract, gold-colored geometric shapes. On the left, there is a vertical rectangle and a parallelogram. In the upper left, a long, thin parallelogram points towards the center. In the center, a large, irregular polygon points towards the right. In the lower right, another parallelogram points towards the bottom right corner. The text is positioned in the white space between the central and right-side shapes.

# FLAWLESS USER EXPERIENCE



# PROGRAMMING EXCELLENCE FOR A SUPERIOR WORKFLOW



## Functionality with a single touch.

Baristas can easily change settings, read all the information needed and maintain total control of the grinder.



## Fluid, intelligent and easy-to-use programming logic.

Intuitive programming logic makes service smoother and more hassle-free, allowing for coffee professionals to focus on consistency and quality.



# ABSOLUTE CONTROL



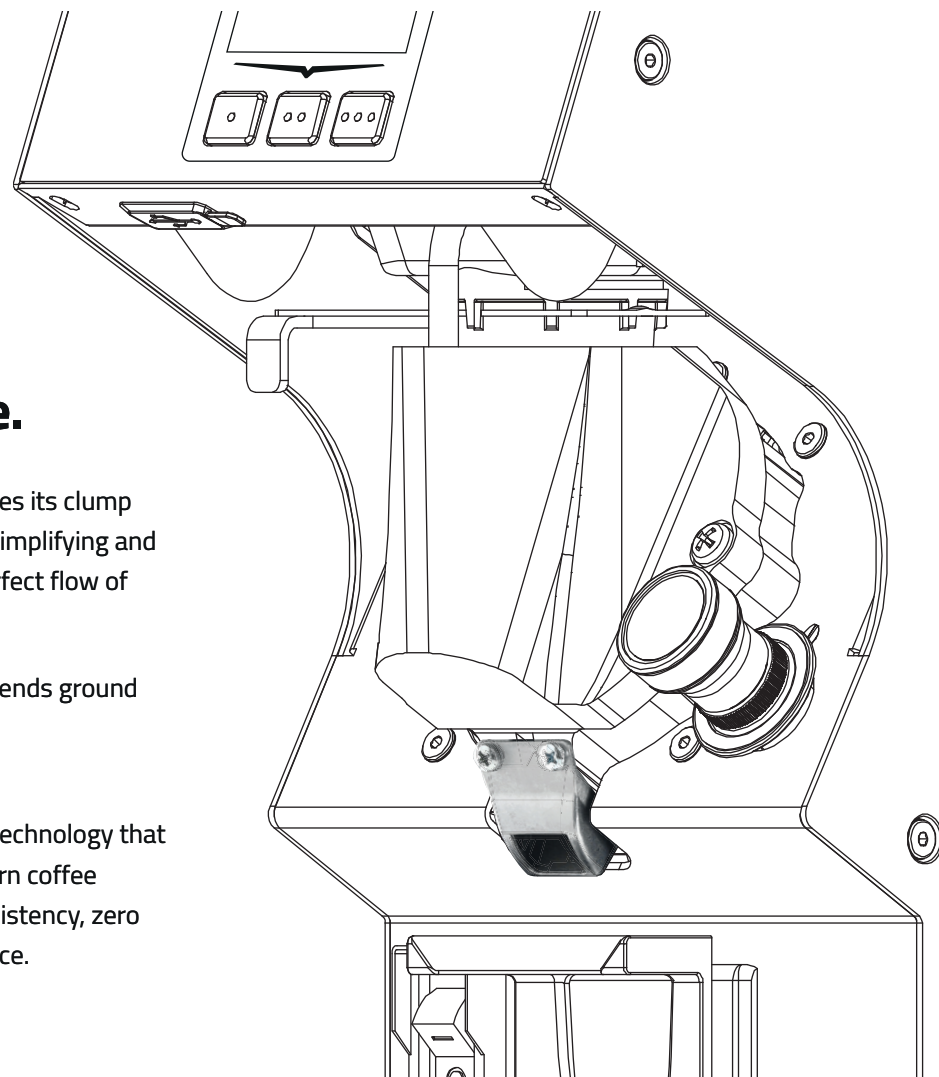
# THE ORIGINAL STANDARD FOR ABSOLUTE CONTROL

## Perfect flow and zero waste.

Today, Mythos further improves its clump crusher and outlet spout, by simplifying and reinforcing it to guarantee perfect flow of ground coffee in the filter.

The filterholder hook design sends ground coffee into the filter thus minimising waste.

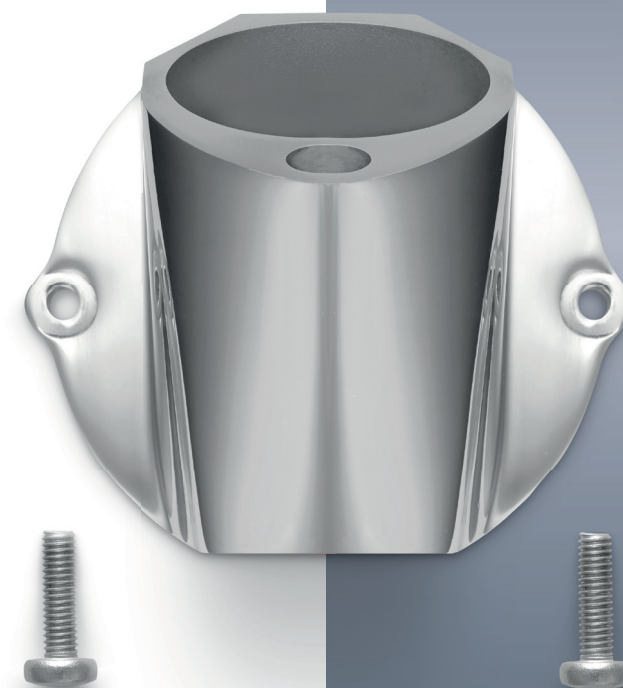
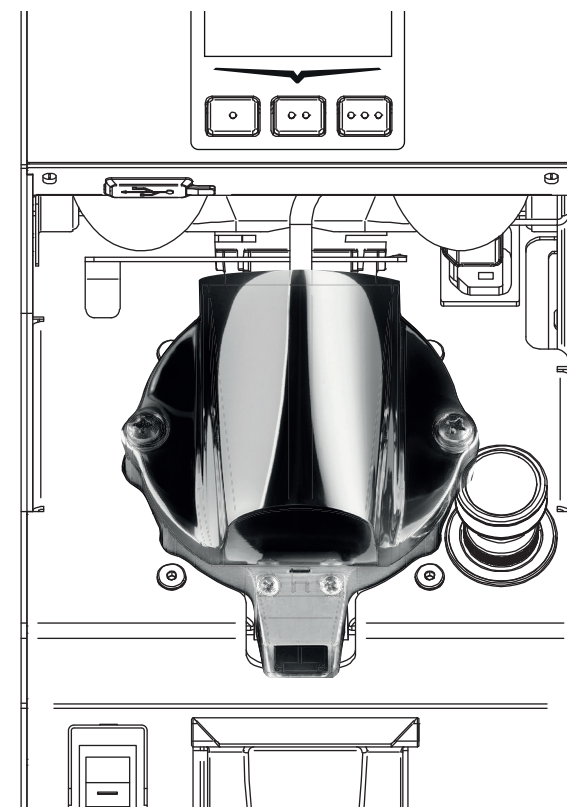
Mythos native and patented technology that meets the needs of the modern coffee professionals: maximum consistency, zero waste and ease of maintenance.



## Immediate accessibility.

Cleaning and maintenance operations are simple and accessible.

We have reduced the number of screws to access the heart of the machine and have improved direct visibility to the key functioning parts of Mythos.



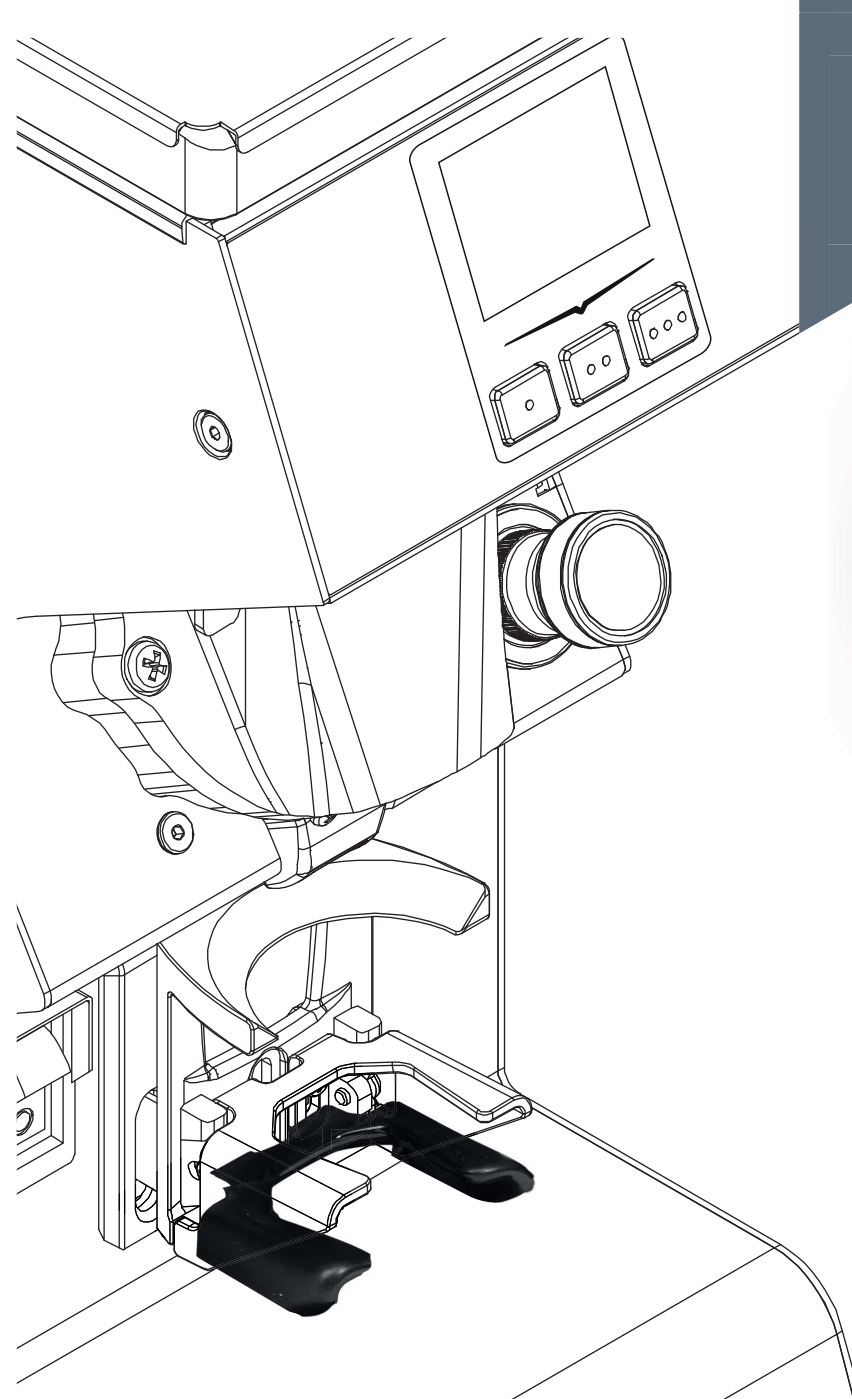
## The lowest temperature tolerance ever achieved.

Different coffees need different grinding temperatures. With Mythos Clima Pro, baristas can set grinding temperatures from 30 to 60°C in order to extract the greatest qualities of each type of coffee.

For us, better control leads to better results.

## What's essential when you never accept limits.

The gravimetric version has an upgraded programming and built-in scale. These features grant maximum consistency and create a much faster workflow for grinding and weighting coffee.



## Tailored granulometry.

Easy and precise micrometric adjustment allows baristas to manage each shot with more accuracy. Barista can read burrs distance directly from the display in order to have an improved understanding of grind setting variable.







# ICONIC DESIGN

# AESTHETICS AND EFFICIENCY: THIS IS OUR SENSE OF DESIGN

## Exciting integrated display.

The smooth and responsive combination of the glass and touchscreen integrated display create an intuitive and fluid control panel that is elegant, simple to adjust and easy to clean.



## Doubled coolness.

We were the first to install two fans instead of one, and again the first to mount them both on the back. This provides for ideal airflow inside of the grind chamber. Counter space is a premium for cafes. If you need to use several grinders at the same time for different needs, now each grinder can be set side by side. A wall of excellence at your service.





A close-up photograph of a hand holding a stainless steel portafilter filled with dark brown coffee grounds. The portafilter is positioned next to a black and silver manual coffee grinder. The grinder has a large silver hopper and a adjustment dial with 'FINE' and 'COARSE' settings. The background is a blurred indoor setting, possibly a cafe or kitchen.

**MYTHOS  
WAS CREATED FOR  
PROFESSIONALS  
WHO DESERVE  
THE BEST.**



# 6 VERSIONS OF PERFECTION

Tailored to your needs: Mythos creates a system of excellence and satisfies the pursuit of your passion with the same vision.

## MY65

- Simplified display
- 65mm burrs

## MYONE

- Simplified display
- 75mm burrs

## MY75

- 75mm burrs

## MY85

- 85mm burrs

## MYG85

- 85mm burrs
- Gravitec

## MYG75

- 75mm burrs
- Gravitec

OFFICIAL  
GRINDER



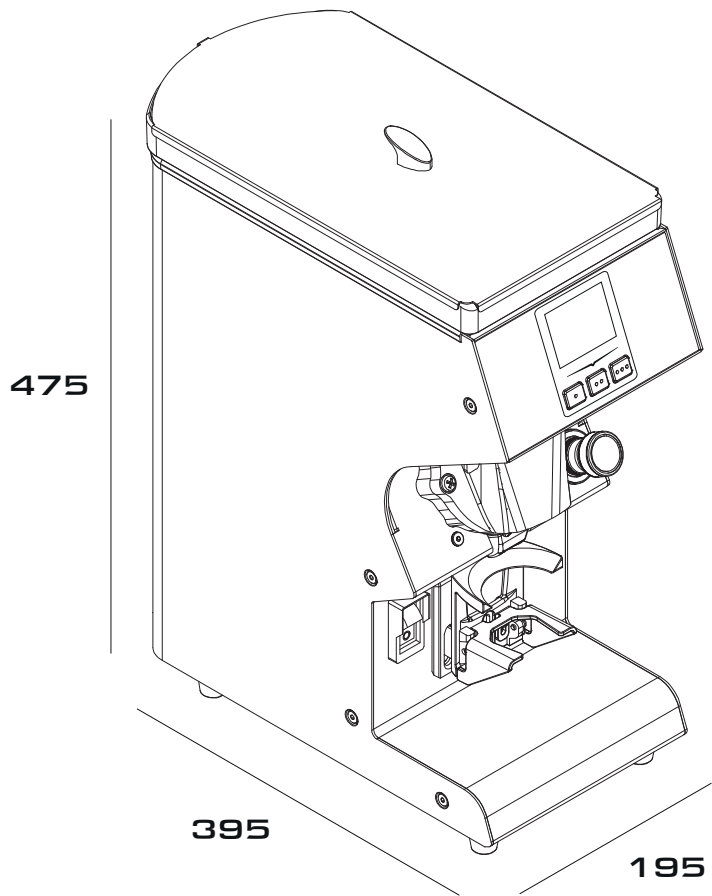


# 6 VERSIONS OF PERFECTION

Tailored to your needs: Mythos creates a system of excellence and satisfies the pursuit of your passion with the same vision.

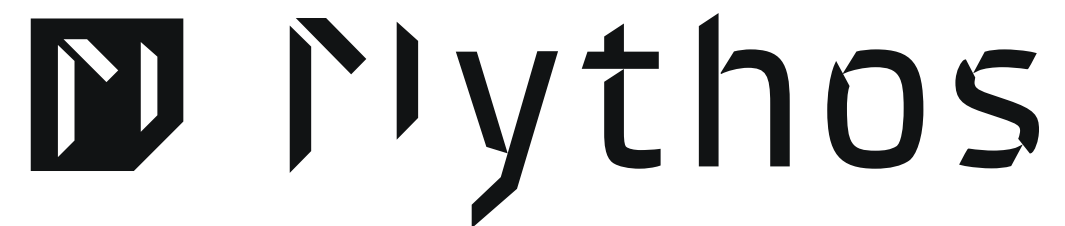


# DETAILS AND OPTIONALS



Version	MY65	MYONE	MY75	MY85	MYG85	MYG75
Bean Hopper Capacity	1,5kg	1,5kg	1,5kg	1,5kg	1,5kg	1,5kg
Grinding Regulation	Micrometric	Micrometric	Micrometric	Micrometric	Micrometric	Micrometric
Burrs Distance Setting	Not included	Not Included	Included	Included	Included	Included
Burrs Material	Black Diamond	Titanium	Titanium	Titanium	Titanium	Titanium
Long Life Treatment	Included	Included	Included	Included	Included	Included
Engine Protection System	Included	Included	Included	Included	Included	Included
Clima Pro Technology	Included (1 fan)	Included (2 fans)	Included (2 fans)	Included (2 fans)	Included (2 fans)	Included (2 fans)
Type Of Dosage	Timed	Timed	Timed	Timed	Gravimetric	Gravimetric
Burrs (mm)	65	75	75	85	85	75
Grinding Speed (gram/sec)	2,5 - 3,0	2,5 - 3,0	2,5 - 3,0	3,5 - 4,0	3,5 - 4,0	2,5 - 3,0
Touchscreen Display	TFT Display	TFT Display	Included	Included	Included	Included
Electronic Dosing	Included	Included	Included	Included	Included	Included
N. Programmed Doses	3	3	3	3	3	3
Stop&Go	Included	Included	Included	Included	Included	Included
Barista Function	Included	Included	Included	Included	Included	Included
Dose Addition Function	Included	Included	Included	Included	Included	Included
Languages	I/GB/F/D/E	I/GB/F/D/E	I/GB/F/D/E	I/GB/F/D/E	I/GB/F/D/E	I/GB/F/D/E
Total Counter	Included	Included	Included	Included	Included	Included
Partial Counter	Included	Included	Included	Included	Included	Included
Weight (net – Kg)	21,2	23,7	23,8	24,5	24,7	24
Power	230 V / 650 W 115 V / 750 W	230 V / 450 W 115 V / 960 W	230 V / 450 W 115 V / 960 W	230 V / 650 W 115 V / 750 W	230 V / 650 W 115 V / 750 W	230 V / 450 W 115 V / 960 W





*Victoria Arduino*

Simonelli Group SpA | via E. Betti, 1 | 62020 Belforte del Chienti (MC) Italy | P. +39 0733 9501

[info@victoriaarduino.com](mailto:info@victoriaarduino.com)

[www.victoriaarduino.com](http://www.victoriaarduino.com)

 [victoriaarduinoofficial](https://www.instagram.com/victoriaarduinoofficial)